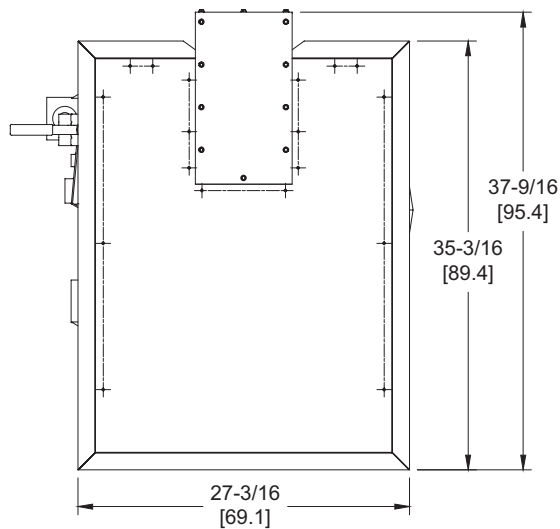


# DOMINATOR 300

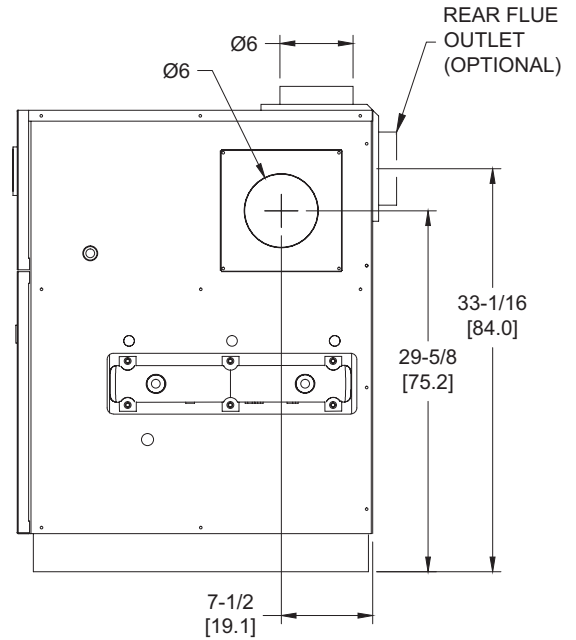
**Category I or Category III Appliance**  
 (see Installation and Operation Manual for venting information)

## CODE OPTIONS

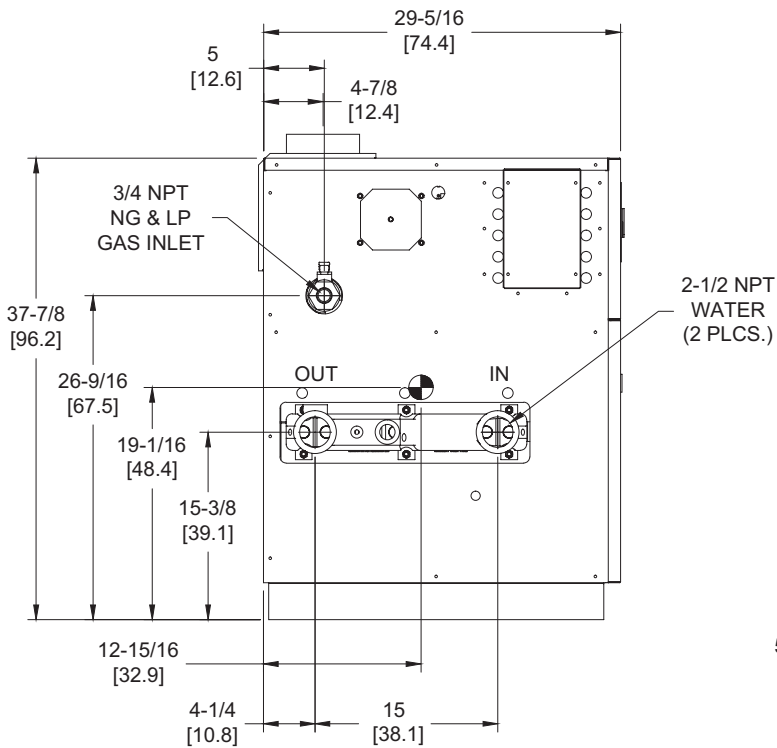
<b>CSD-1</b>	UTC Lockout/Reset Control Manual Reset LWCO
--------------	--



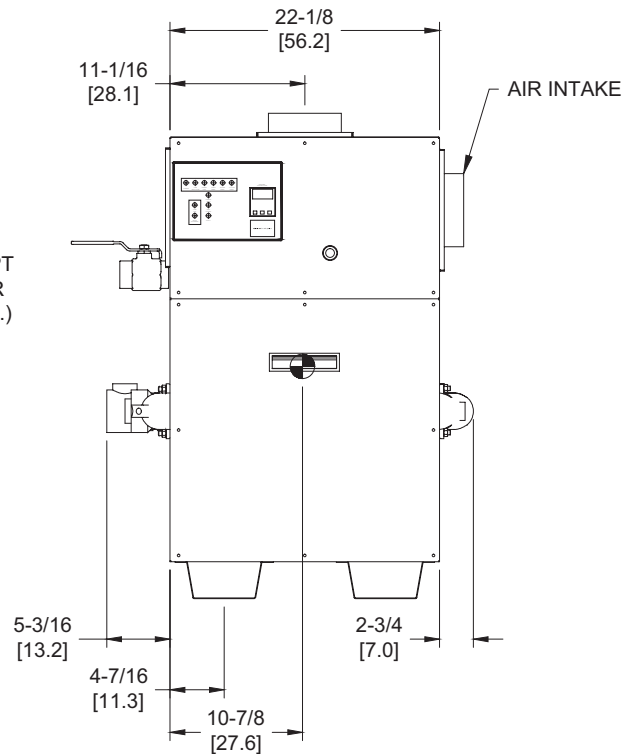
OUTDOOR TOP VIEW



RIGHT VIEW



LEFT VIEW



FRONT VIEW

RSUB-27-E

**Notes:**

1. Dimensions are approximate and should not be used to "rough-in" equipment.
2. Dimensions are subject to change without notice.
3. All dimensions are in inches (cm).
4. Symbol indicates center of gravity.

## BOILER CERTIFIED RATINGS & CAPACITIES

<b>Fuel Type</b>	Natural/Propane Gas	<b>Boiler FLA</b>	3.8*
<b>Input BTU/hr.</b>	300,000 / 88 kW	<b>Min. Gas Pressure Required</b>	7" WC**
<b>Output BTU/hr.</b>	250,500 / 73 kW	<b>Max. Gas Pressure Allowed</b>	14" WC
<b>Electrical Requirements</b>	120VAC/ 1 ph/ 60 hz	<b>Operating Weight</b>	416 lbs. / 189 kg.

## BOILER / WATER HEATER TRIM & CONTROLS

<b>Main Gas Valve</b>	Honeywell VR8304 3/4"	<b>Pilot Valve</b>	Honeywell VR8304
<b>Firing Valve</b>	Honeywell B200T1025 3/4"	<b>Air Switch</b>	Cleveland RSS-495
<b>Ignition Control</b>	UTC 1003-61A	<b>Blower Motor</b>	1/5 hp - FLA 3.0
<b>High Limit</b>	Honeywell L4008E	<b>Relief Valve - DW</b>	3/4" x 3/4" set @ 125 psi
		<b>Relief Valve - DB</b>	3/4" x 3/4" set @ 50 psi
		<b>Flow Switch</b>	TACO

## A.S.M.E.

<b>ASME Sect IV Htg Surface</b>	38.0 Sq. Ft. / 3.53 Sq. M.	<b>Design Data</b>	Max. 160 psig & 250°F
<b>Water Volume</b>	3.5 gal / 13.2 Liters		

\* Add circulator amps.

\*\* For incoming gas pressures lower than 7" WC natural or 11" WC propane, consult factory.

## BOILER TEMPERATURE RISE / PRESSURE DROP

15°F / 8.3°C				20°F / 11.1°C				25°F / 13.9°C			
Flow Rate		Pressure Drop		Flow Rate		Pressure Drop		Flow Rate		Pressure Drop	
GPM	L/s	Ft	kPa	GPM	L/s	Ft	kPa	GPM	L/s	Ft	kPa
33.4	2.1	0.21	0.6	25.1	1.6	0.12	0.4	20.0	1.3	0.08	0.2

## WATER HEATER HOURLY RECOVERY CAPACITY (GPH & LPH)

40°F	22°C	60°F	33°C	80°F	44°C	100°F	56°C	120°F	67°C	140°F	78°C
723	2733	482	1822	361	1366	289	1093	241	911	207	781

**REP FIRM** \_\_\_\_\_  
**SUBMITTED BY** \_\_\_\_\_  
**JOB NAME** \_\_\_\_\_  
**ARCHITECT** \_\_\_\_\_  
**ENGINEER** \_\_\_\_\_  
**CONTRACTOR** \_\_\_\_\_  
**DATE** \_\_\_\_\_

# DOMINATOR 300

**Category I or Category III Appliance**  
(see Installation and Operation Manual for venting information)

**RBI**®  
RELIABLE. BOLD. INNOVATIVE.

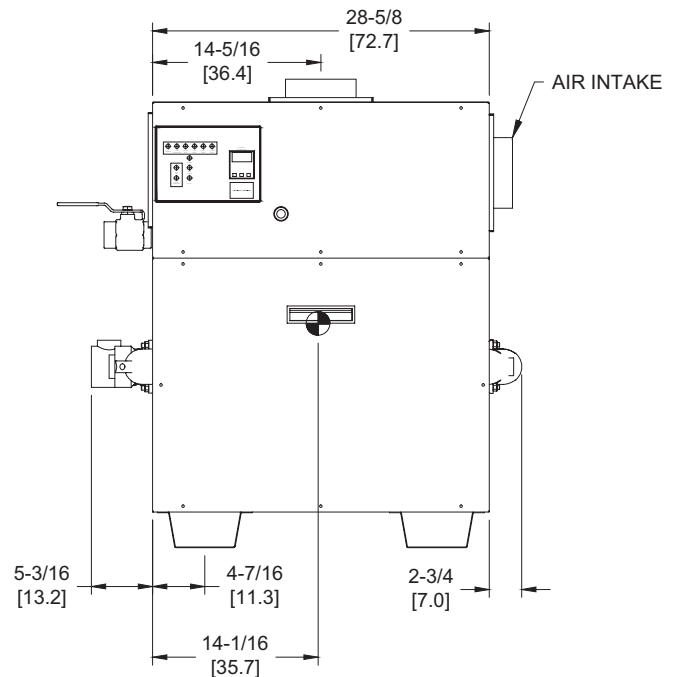
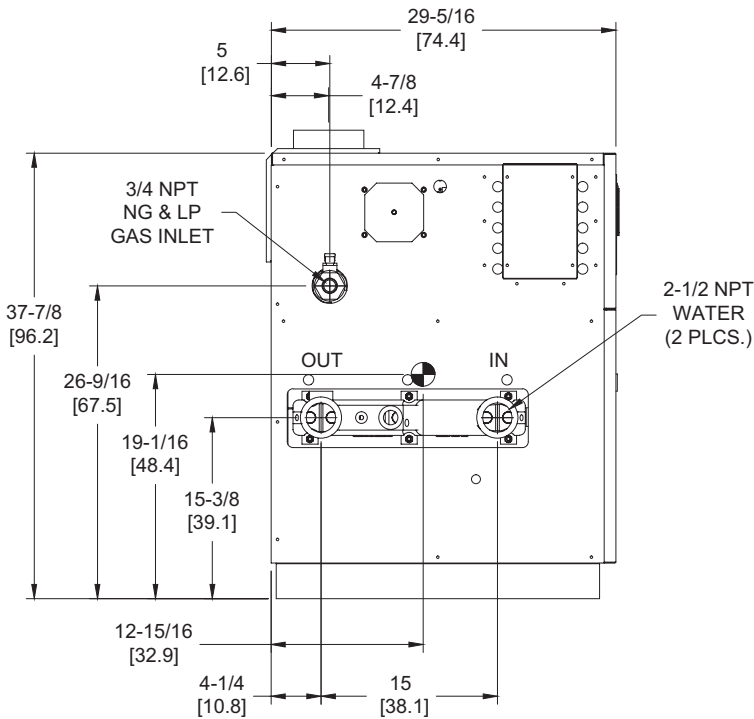
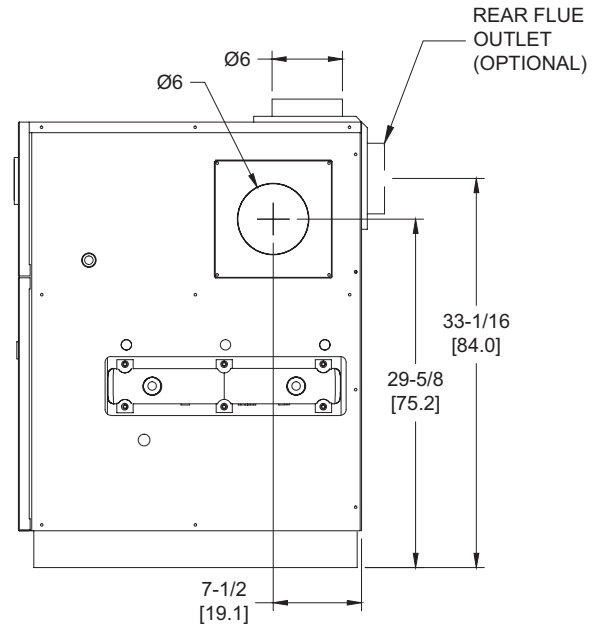
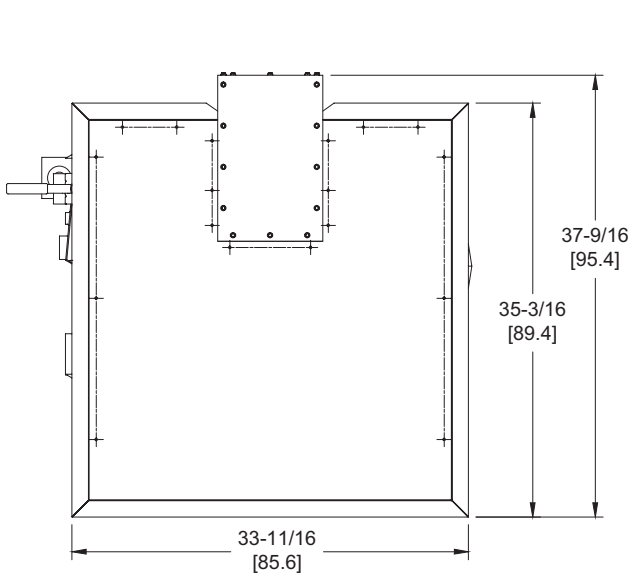
A Division of Mestek, Inc.  
Westfield, MA 01085  
(413) 564-5515

# DOMINATOR 400

**Category I or Category III Appliance**  
(see Installation and Operation Manual for venting information)

## CODE OPTIONS

<b>CSD-1</b>	UTC Lockout/Reset Control Manual Reset LWCO
--------------	--



RSUB-28-E

**Dominator 400 model water heater not available for sale in the U.S. market due to DOE regulations.**

### Notes:

1. Dimensions are approximate and should not be used to "rough-in" equipment.
2. Dimensions are subject to change without notice.
3. All dimensions are in inches (cm).
4. Symbol indicates center of gravity.

## BOILER CERTIFIED RATINGS & CAPACITIES

<b>Fuel Type</b>	Natural/Propane Gas	<b>Boiler FLA</b>	3.8*
<b>Input BTU/hr.</b>	399,000 / 117 kW	<b>Min. Gas Pressure Required</b>	7" WC**
<b>Output BTU/hr.</b>	339,150 / 99 kW	<b>Max. Gas Pressure Allowed</b>	14" WC
<b>Electrical Requirements</b>	120VAC/ 1 ph/ 60 hz	<b>Operating Weight</b>	490 lbs. / 222 kg.

## BOILER / WATER HEATER TRIM & CONTROLS

<b>Main Gas Valve</b>	Honeywell VR8305 3/4"	<b>Pilot Valve</b>	Honeywell VR8205
<b>Firing Valve</b>	Honeywell B200T1025 3/4"	<b>Air Switch</b>	Cleveland RSS-495
<b>Ignition Control</b>	UTC 1003-61A	<b>Blower Motor</b>	1/5 hp - FLA 3.0
<b>Operating Control</b>	Tekmar BTC-2PA	<b>Relief Valve - DW</b>	3/4" x 3/4" set @ 125 psi
<b>High Limit</b>	Honeywell L4008E	<b>Relief Valve - DB</b>	3/4" x 3/4" set @ 50 psi
		<b>Flow Switch</b>	TACO

## A.S.M.E.

<b>ASME Sect IV Htg Surface</b>	50.0 Sq. Ft. / 4.65 Sq. M.	<b>Design Data</b>	Max. 160 psig & 250°F
<b>Water Volume</b>	3.6 gal / 13.6 Liters		

\* Add circulator amps.

\*\* For incoming gas pressures lower than 7" WC natural or 11" WC propane, consult factory.

## BOILER TEMPERATURE RISE / PRESSURE DROP

15°F / 8.3°C				20°F / 11.1°C				25°F / 13.9°C			
Flow Rate		Pressure Drop		Flow Rate		Pressure Drop		Flow Rate		Pressure Drop	
GPM	L/s	Ft	kPa	GPM	L/s	Ft	kPa	GPM	L/s	Ft	kPa
45.3	2.9	0.49	1.5	34.0	2.1	0.29	0.9	27.2	1.7	0.19	0.6

## WATER HEATER HOURLY RECOVERY CAPACITY (GPH & LPH)

40°F	22°C	60°F	33°C	80°F	44°C	100°F	56°C	120°F	67°C	140°F	78°C
1018	3853	679	2569	509	1927	407	1541	339	1284	291	1101

**Dominator 400 model water heater not available for sale in the U.S. market due to DOE regulations.**

<b>REP FIRM</b>	_____
<b>SUBMITTED BY</b>	_____
<b>JOB NAME</b>	_____
<b>ARCHITECT</b>	_____
<b>ENGINEER</b>	_____
<b>CONTRACTOR</b>	_____
<b>DATE</b>	_____

# DOMINATOR 400

**Category I or Category III Appliance**  
(see Installation and Operation Manual for venting information)

**RBI**®  
RELIABLE. BOLD. INNOVATIVE.

A Division of Mestek, Inc.  
Westfield, MA 01085  
(413) 564-5515

# DOMINATOR 600

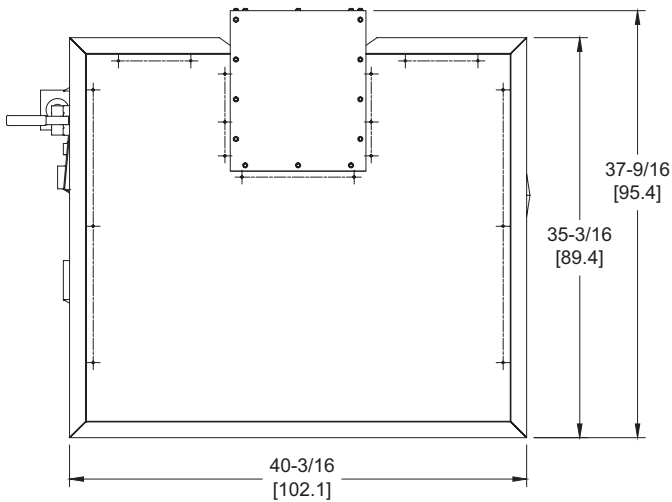
## Category I or Category III Appliance

(see Installation and Operation Manual for venting information)

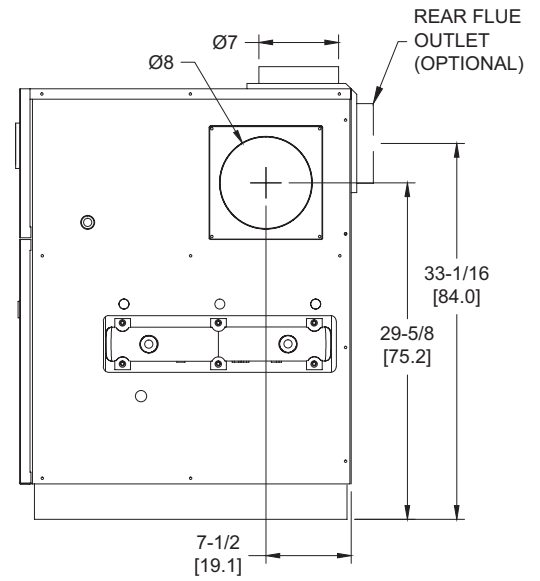
### CODE OPTIONS

CSD-1

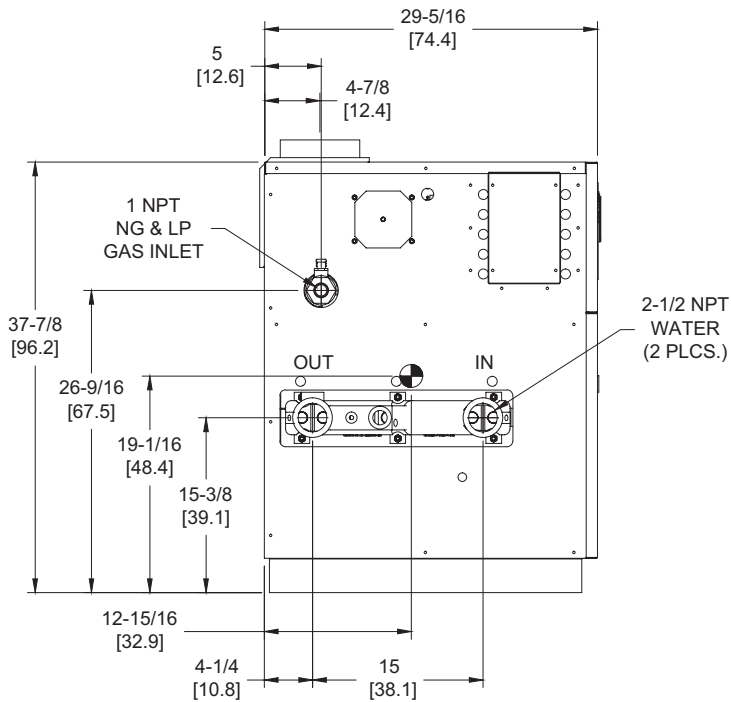
UTC Lockout/Reset Control  
Manual Reset LWCO



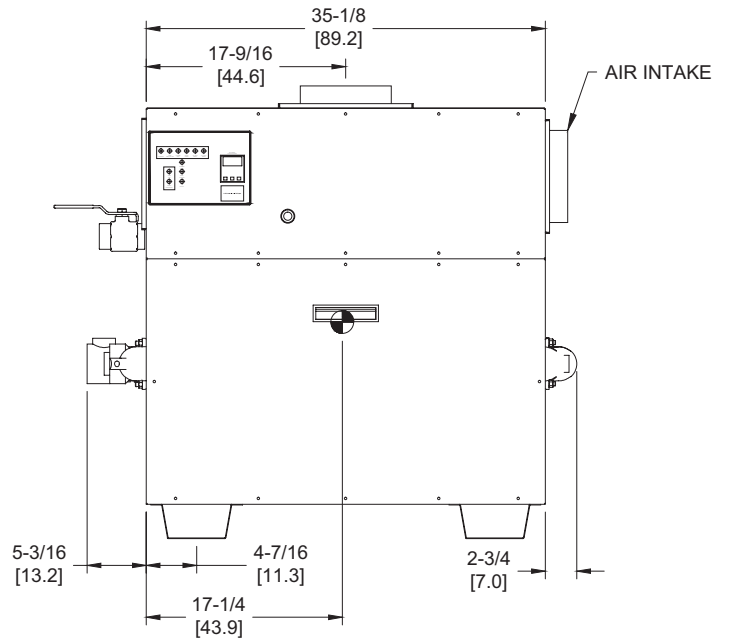
OUTDOOR TOP VIEW



RIGHT VIEW




LEFT VIEW



FRONT VIEW

RSUB-29-E

#### Notes:

1. Dimensions are approximate and should not be used to "rough-in" equipment.
2. Dimensions are subject to change without notice.
3. All dimensions are in inches (cm).
4.  Symbol indicates center of gravity.

## BOILER CERTIFIED RATINGS & CAPACITIES

<b>Fuel Type</b>	Natural/Propane Gas	<b>Boiler FLA</b>	3.8*
<b>Input BTU/hr.</b>	600,000 / 176 kW	<b>Min. Gas Pressure Required</b>	7" WC**
<b>Output BTU/hr.</b>	510,000 / 149 kW	<b>Max. Gas Pressure Allowed</b>	14" WC
<b>Electrical Requirements</b>	120VAC/ 1 ph/ 60 hz	<b>Operating Weight</b>	532 lbs. / 242 kg.

## BOILER / WATER HEATER TRIM & CONTROLS

<b>Main Gas Valve</b>	Honeywell V8944 1"	<b>Pilot Valve</b>	Honeywell VR8205
<b>Firing Valve</b>	Honeywell B200T1033 1"	<b>Air Switch</b>	Cleveland RSS-495
<b>Safety Valve</b>	ASCO L8214G 1"	<b>Blower Motor</b>	1/5 hp - FLA 3.0
<b>Ignition Control</b>	UTC 1003-61A	<b>Relief Valve - DW</b>	3/4" x 3/4" set @ 125 psi
<b>Operating Control</b>	Tekmar BTC-2PA	<b>Relief Valve - DB</b>	3/4" x 3/4" set @ 50 psi
<b>High Limit</b>	Honeywell L4008E	<b>Flow Switch</b>	TACO

## A.S.M.E.

<b>ASME Sect IV Htg Surface</b>	64.0 Sq. Ft. / 5.95 Sq. M.	<b>Design Data</b>	Max. 160 psig & 250°F
<b>Water Volume</b>	3.8 gal / 14.5 Liters		

\* Add circulator amps.

\*\* For incoming gas pressures lower than 7" WC natural or 11" WC propane, consult factory.

## BOILER TEMPERATURE RISE / PRESSURE DROP

15°F / 8.3°C				20°F / 11.1°C				25°F / 13.9°C				30°F / 16.7°C			
Flow Rate		Pressure Drop		Flow Rate		Pressure Drop		Flow Rate		Pressure Drop		Flow Rate		Pressure Drop	
GPM	L/s	Ft	kPa	GPM	L/s	Ft	kPa	GPM	L/s	Ft	kPa	GPM	L/s	Ft	kPa
68.0	4.3	1.30	3.8	51.0	3.2	0.76	2.2	40.8	2.6	0.50	1.5	34.0	2.1	0.36	1.1

## WATER HEATER HOURLY RECOVERY CAPACITY (GPH & LPH)

40°F	22°C	60°F	33°C	80°F	44°C	100°F	56°C	120°F	67°C	140°F	78°C
1486	5616	990	3744	743	2808	594	2246	495	1872	424	1604

**REP FIRM** \_\_\_\_\_  
**SUBMITTED BY** \_\_\_\_\_  
**JOB NAME** \_\_\_\_\_  
**ARCHITECT** \_\_\_\_\_  
**ENGINEER** \_\_\_\_\_  
**CONTRACTOR** \_\_\_\_\_  
**DATE** \_\_\_\_\_

# DOMINATOR 600

**Category I or Category III Appliance**  
(see Installation and Operation Manual for venting information)

**RBI**®  
RELIABLE. BOLD. INNOVATIVE.

A Division of Mestek, Inc.  
Westfield, MA 01085  
(413) 564-5515

# DOMINATOR 750

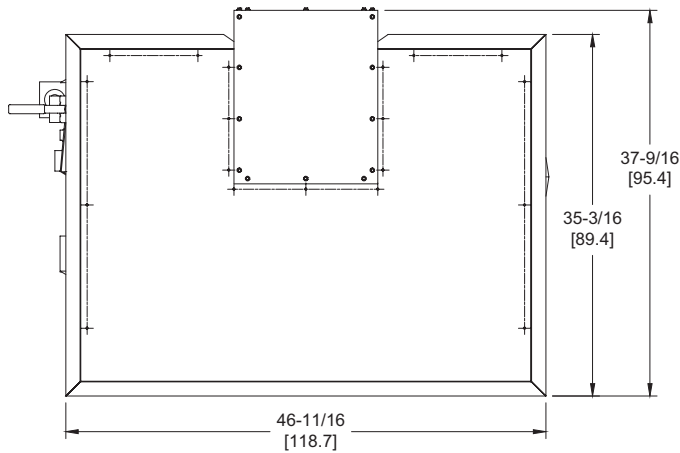
Category I or Category III Appliance

(see Installation and Operation Manual for venting information)

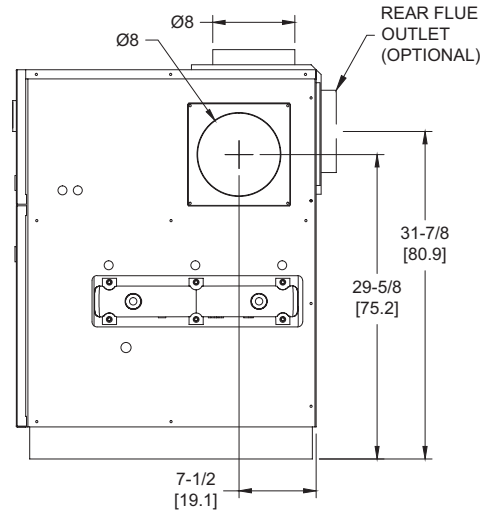
## CODE OPTIONS

CSD-1

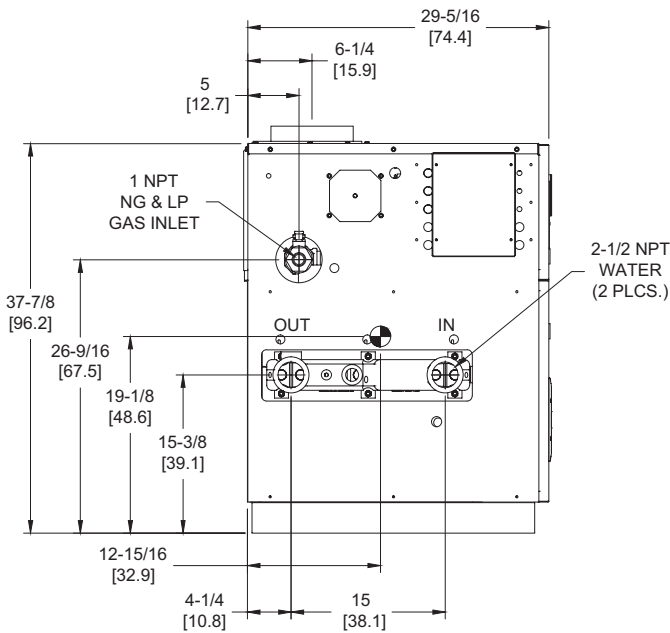
UTC Lockout/Reset Control  
Manual Reset LWCO



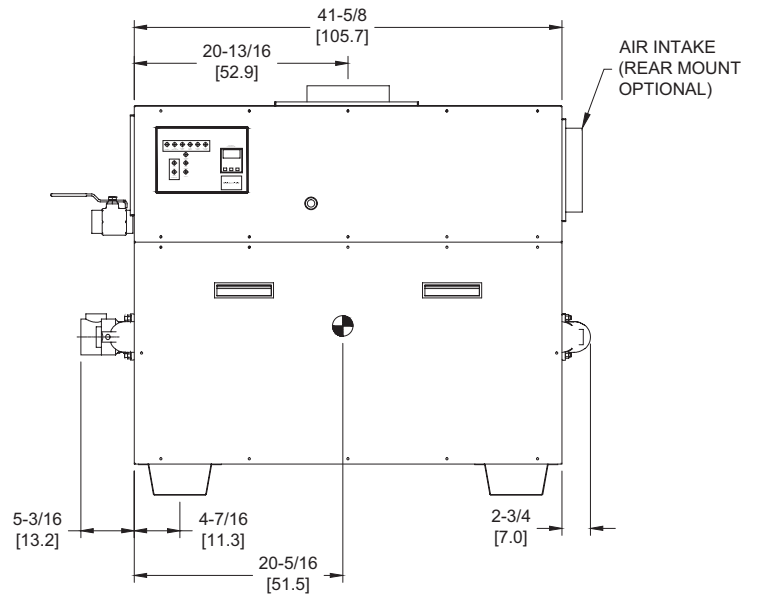
OUTDOOR TOP VIEW



RIGHT VIEW



LEFT VIEW



FRONT VIEW

RSUB-30-E

### Notes:

1. Dimensions are approximate and should not be used to "rough-in" equipment.
2. Dimensions are subject to change without notice.
3. All dimensions are in inches (cm).
4. Symbol indicates center of gravity.

## BOILER CERTIFIED RATINGS & CAPACITIES

<b>Fuel Type</b>	Natural/Propane Gas	<b>Boiler FLA</b>	5.9*
<b>Input BTU/hr.</b>	750,000 / 220 kW	<b>Min. Gas Pressure Required</b>	7" WC**
<b>Output BTU/hr.</b>	637,500 / 187 kW	<b>Max. Gas Pressure Allowed</b>	14" WC
<b>Electrical Requirements</b>	120VAC/ 1 ph/ 60 hz	<b>Operating Weight</b>	573 lbs. / 260 kg.

## BOILER / WATER HEATER TRIM & CONTROLS

<b>Main Gas Valve</b>	Honeywell V8944 1"	<b>Pilot Valve</b>	Honeywell VR8205
<b>Firing Valve</b>	Honeywell B200T1033 1"	<b>Air Switch</b>	Cleveland RSS-495
<b>Safety Valve</b>	ASCO L8214G 1"	<b>Blower Motor</b>	1/4 hp - FLA 5.1
<b>Ignition Control</b>	UTC 1003-61A	<b>Relief Valve - DW</b>	3/4" x 3/4" set @ 125 psi
<b>Operating Control</b>	Tekmar BTC-2PA	<b>Relief Valve - DB</b>	3/4" x 3/4" set @ 50 psi
<b>High Limit</b>	Honeywell L4008E	<b>Flow Switch</b>	TACO

## A.S.M.E.

<b>ASME Sect IV Htg Surface</b>	77.0 Sq. Ft. / 7.15 Sq. M.	<b>Design Data</b>	Max. 160 psig & 250°F
<b>Water Volume</b>	3.9 gal / 14.9 Liters		

\* Add circulator amps.

\*\* For incoming gas pressures lower than 7" WC natural or 11" WC propane, consult factory.

## BOILER TEMPERATURE RISE / PRESSURE DROP

20°F / 11.1°C				25°F / 13.9°C				30°F / 16.7°C				35°F / 19.4°C			
Flow Rate		Pressure Drop		Flow Rate		Pressure Drop		Flow Rate		Pressure Drop		Flow Rate		Pressure Drop	
GPM	L/s	Ft	kPa	GPM	L/s	Ft	kPa	GPM	L/s	Ft	kPa	GPM	L/s	Ft	kPa
63.8	4.0	1.38	4.1	51.0	3.2	0.91	2.7	42.5	2.7	0.65	1.9	36.4	2.3	0.49	1.4

## WATER HEATER HOURLY RECOVERY CAPACITY (GPH & LPH)

40°F	22°C	60°F	33°C	80°F	44°C	100°F	56°C	120°F	67°C	140°F	78°C
1857	7019	1238	4680	928	3510	743	2808	619	2340	531	2006

**REP FIRM** \_\_\_\_\_  
**SUBMITTED BY** \_\_\_\_\_  
**JOB NAME** \_\_\_\_\_  
**ARCHITECT** \_\_\_\_\_  
**ENGINEER** \_\_\_\_\_  
**CONTRACTOR** \_\_\_\_\_  
**DATE** \_\_\_\_\_

# DOMINATOR 750

**Category I or Category III Appliance**  
(see Installation and Operation Manual for venting information)

**RBI**®  
RELIABLE. BOLD. INNOVATIVE.

A Division of Mestek, Inc.  
Westfield, MA 01085  
(413) 564-5515



# DOMINATOR 900

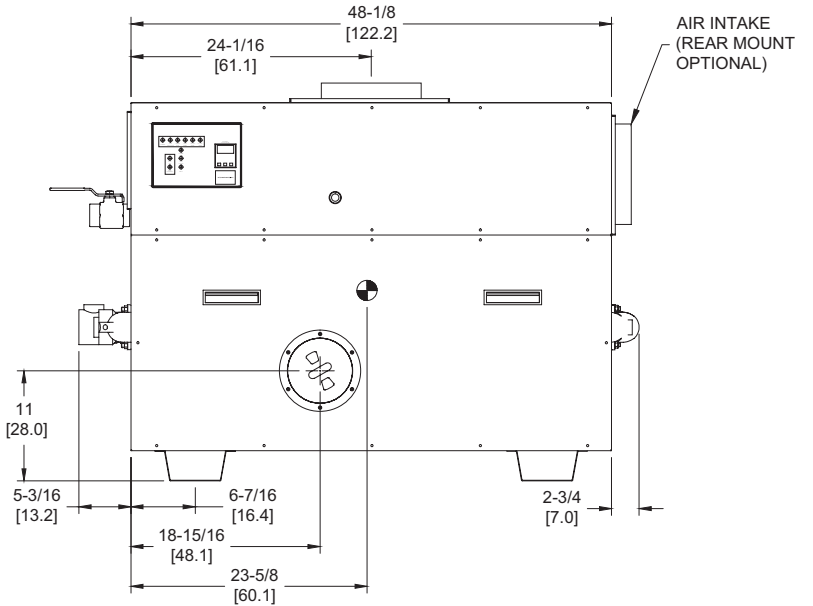
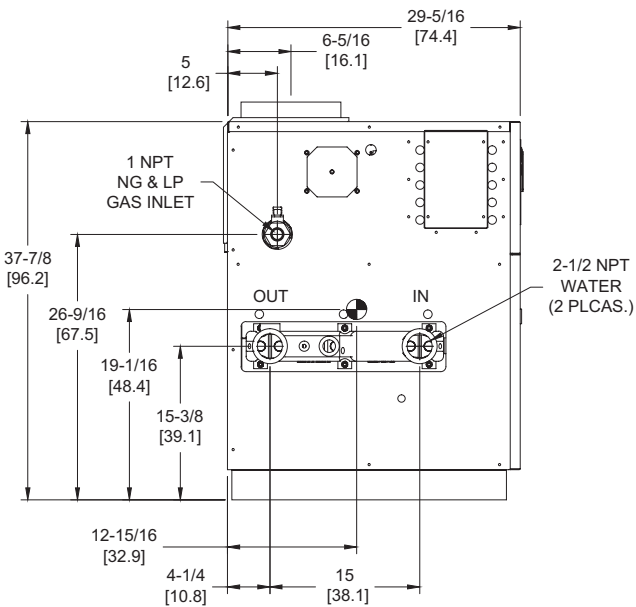
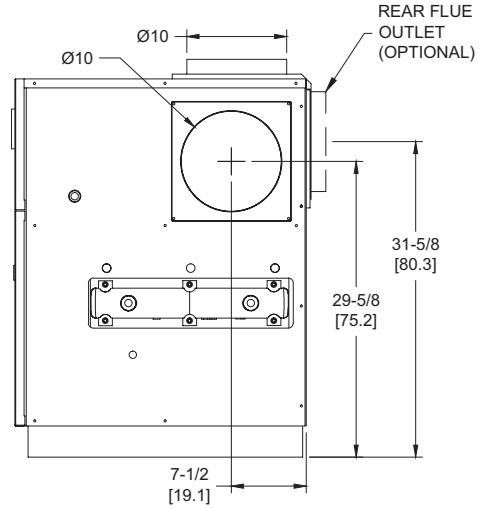
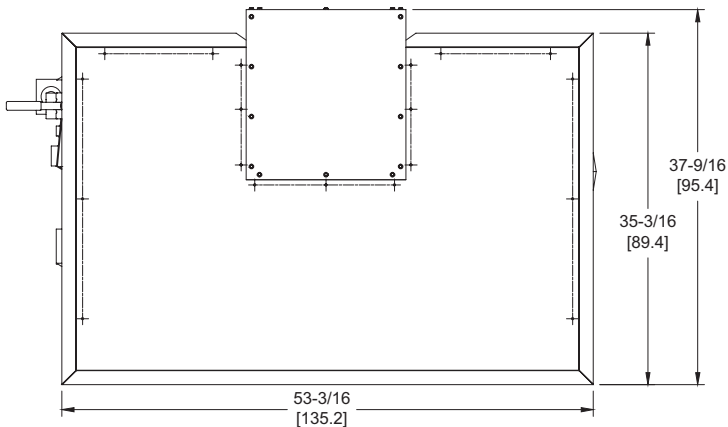
Category I or Category III Appliance

(see Installation and Operation Manual for venting information)

## CODE OPTIONS

CSD-1

UTC Lockout/Reset Control  
Manual Reset LWCO



RSUB-31-E

### Notes:

1. Dimensions are approximate and should not be used to "rough-in" equipment.
2. Dimensions are subject to change without notice.
3. All dimensions are in inches (cm).
4. Symbol indicates center of gravity.

## BOILER CERTIFIED RATINGS & CAPACITIES

<b>Fuel Type</b>	Natural/Propane Gas	<b>Boiler FLA</b>	5.9*
<b>Input BTU/hr.</b>	900,000 / 264 kW	<b>Min. Gas Pressure Required</b>	7" WC**
<b>Output BTU/hr.</b>	765,000 / 224 kW	<b>Max. Gas Pressure Allowed</b>	14" WC
<b>Electrical Requirements</b>	120VAC/ 1 ph/ 60 hz	<b>Operating Weight</b>	664 lbs. / 301 kg.

## BOILER / WATER HEATER TRIM & CONTROLS

<b>Main Gas Valve</b>	Honeywell V8944 1"	<b>Pilot Valve</b>	Honeywell VR8205
<b>Firing Valve</b>	Honeywell B200T1033 1"	<b>Air Switch</b>	Cleveland RSS-495
<b>Safety Valve</b>	ASCO L8214G 1"	<b>Blower Motor</b>	1/4 hp - FLA 5.1
<b>Ignition Control</b>	UTC 1003-61A	<b>Relief Valve - DW</b>	3/4" x 3/4" set @ 125 psi
<b>Operating Control</b>	Tekmar BTC-2PA	<b>Relief Valve - DB</b>	3/4" x 3/4" set @ 50 psi
<b>High Limit</b>	Honeywell L4008E	<b>Flow Switch</b>	TACO

## A.S.M.E.

<b>ASME Sect IV Htg Surface</b>	90.0 Sq. Ft. / 8.36 Sq. M.	<b>Design Data</b>	Max. 160 psig & 250°F
<b>Water Volume</b>	4.1 gal / 15.4 Liters		

\* Add circulator amps.

\*\* For incoming gas pressures lower than 7" WC natural or 11" WC propane, consult factory.

## BOILER TEMPERATURE RISE / PRESSURE DROP

20°F / 11.1°C				25°F / 13.9°C				30°F / 16.7°C				35°F / 19.4°C			
Flow Rate		Pressure Drop		Flow Rate		Pressure Drop		Flow Rate		Pressure Drop		Flow Rate		Pressure Drop	
GPM	L/s	Ft	kPa	GPM	L/s	Ft	kPa	GPM	L/s	Ft	kPa	GPM	L/s	Ft	kPa
76.5	4.8	2.25	6.6	61.2	3.9	1.49	4.4	51.0	3.2	1.06	3.1	43.7	2.8	0.80	2.4

## WATER HEATER HOURLY RECOVERY CAPACITY (GPH & LPH)

40°F	22°C	60°F	33°C	80°F	44°C	100°F	56°C	120°F	67°C	140°F	78°C
2228	8423	1486	5616	1114	4212	891	3369	743	2808	637	2407

<b>REP FIRM</b>	_____
<b>SUBMITTED BY</b>	_____
<b>JOB NAME</b>	_____
<b>ARCHITECT</b>	_____
<b>ENGINEER</b>	_____
<b>CONTRACTOR</b>	_____
<b>DATE</b>	_____

# DOMINATOR 900

**Category I or Category III Appliance**  
(see Installation and Operation Manual for venting information)



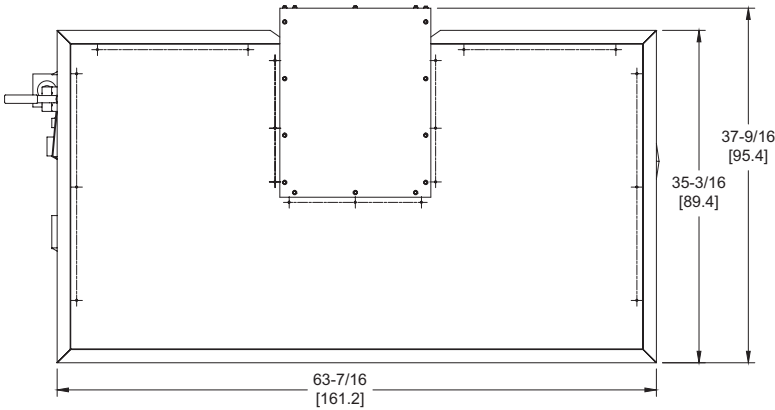
A Division of Mestek, Inc.  
Westfield, MA 01085  
(413) 564-5515

# DOMINATOR 1050

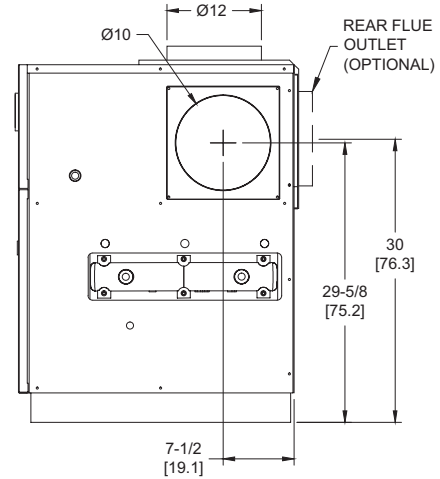
**Category I or Category III Appliance**  
(see Installation and Operation Manual for venting information)

## CODE OPTIONS

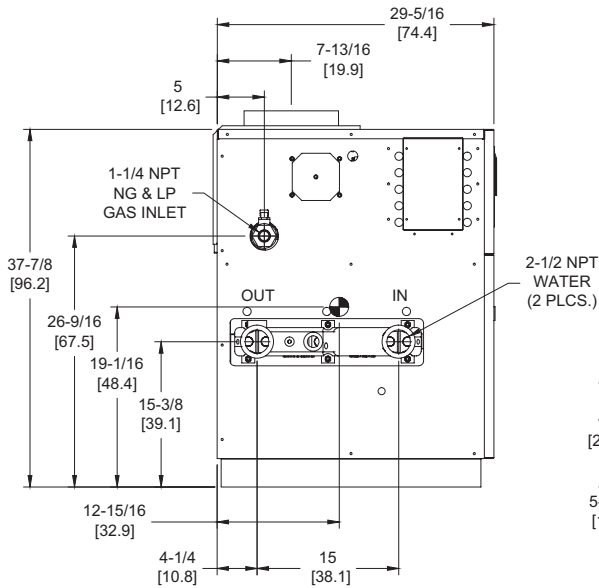
<b>CSD-1</b>	UTC Lockout/Reset Control Manual Reset LWCO
--------------	--



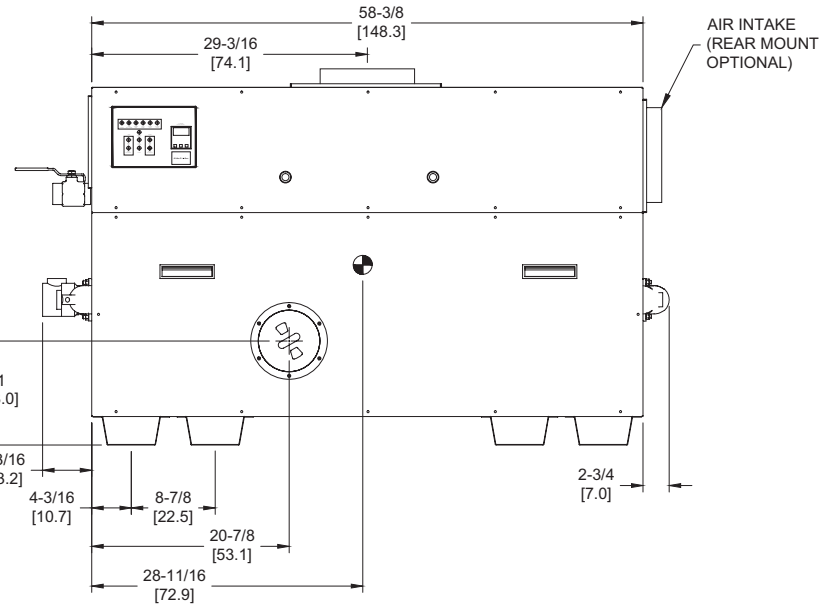
OUTDOOR TOP VIEW



RIGHT VIEW



LEFT VIEW



FRONT VIEW

RSUB-32-E

### Notes:

1. Dimensions are approximate and should not be used to "rough-in" equipment.
2. Dimensions are subject to change without notice.
3. All dimensions are in inches (cm).
4. Symbol indicates center of gravity.

## BOILER CERTIFIED RATINGS & CAPACITIES

<b>Fuel Type</b>	Natural/Propane Gas	<b>Boiler FLA</b>	11.0*
<b>Input BTU/hr.</b>	1,050,000 / 308 kW	<b>Min. Gas Pressure Required</b>	7" WC**
<b>Output BTU/hr.</b>	892,500 / 262 kW	<b>Max. Gas Pressure Allowed</b>	14" WC
<b>Electrical Requirements</b>	120VAC/ 1 ph/ 60 hz	<b>Operating Weight</b>	772 lbs. / 350 kg.

## BOILER / WATER HEATER TRIM & CONTROLS

<b>Main Gas Valve</b>	Honeywell (2) V8944 1"	<b>Pilot Valve</b>	Honeywell VR8205
<b>Firing Valve</b>	Honeywell (2) B200T1033 1"	<b>Air Switch</b>	Cleveland RSS-495
<b>Safety Valve</b>	ASCO L8214G 1-1/4"	<b>Blower Motor</b>	(2) 1/4 hp - FLA 10.2
<b>Ignition Control</b>	UTC 1003-61A	<b>Relief Valve - DW</b>	3/4" x 3/4" set @ 125 psi
<b>Operating Control</b>	Tekmar BTC-2PA	<b>Relief Valve - DB</b>	3/4" x 3/4" set @ 50 psi
<b>Operating Control</b>	Tekmar BTC-4PA	<b>Flow Switch</b>	TACO
<b>High Limit</b>	Honeywell L4008E		

## A.S.M.E.

<b>ASME Sect IV Htg Surface</b>	110.0 Sq. Ft. / 10.22 Sq. M.	<b>Design Data</b>	Max. 160 psig & 250°F
<b>Water Volume</b>	4.4 gal / 16.8 Liters		

\* Add circulator amps.

\*\* For incoming gas pressures lower than 7" WC natural or 11" WC propane, consult factory.

## BOILER TEMPERATURE RISE / PRESSURE DROP

20°F / 11.1°C				25°F / 13.9°C				30°F / 16.7°C				35°F / 19.4°C			
Flow Rate		Pressure Drop		Flow Rate		Pressure Drop		Flow Rate		Pressure Drop		Flow Rate		Pressure Drop	
GPM	L/s	Ft	kPa	GPM	L/s	Ft	kPa	GPM	L/s	Ft	kPa	GPM	L/s	Ft	kPa
89.3	5.6	3.65	10.7	71.4	4.5	2.41	7.1	59.5	3.8	1.72	5.1	51.0	3.2	1.29	3.8

## WATER HEATER HOURLY RECOVERY CAPACITY (GPH & LPH)

40°F	22°C	60°F	33°C	80°F	44°C	100°F	56°C	120°F	67°C	140°F	78°C
2597	9815	1731	6544	1298	4908	1039	3926	866	3272	742	2804

<b>REP FIRM</b>	_____
<b>SUBMITTED BY</b>	_____
<b>JOB NAME</b>	_____
<b>ARCHITECT</b>	_____
<b>ENGINEER</b>	_____
<b>CONTRACTOR</b>	_____
<b>DATE</b>	_____

# DOMINATOR 1050

**Category I or Category III Appliance**  
(see Installation and Operation Manual for venting information)



A Division of Mestek, Inc.  
Westfield, MA 01085  
(413) 564-5515

# DOMINATOR 1350

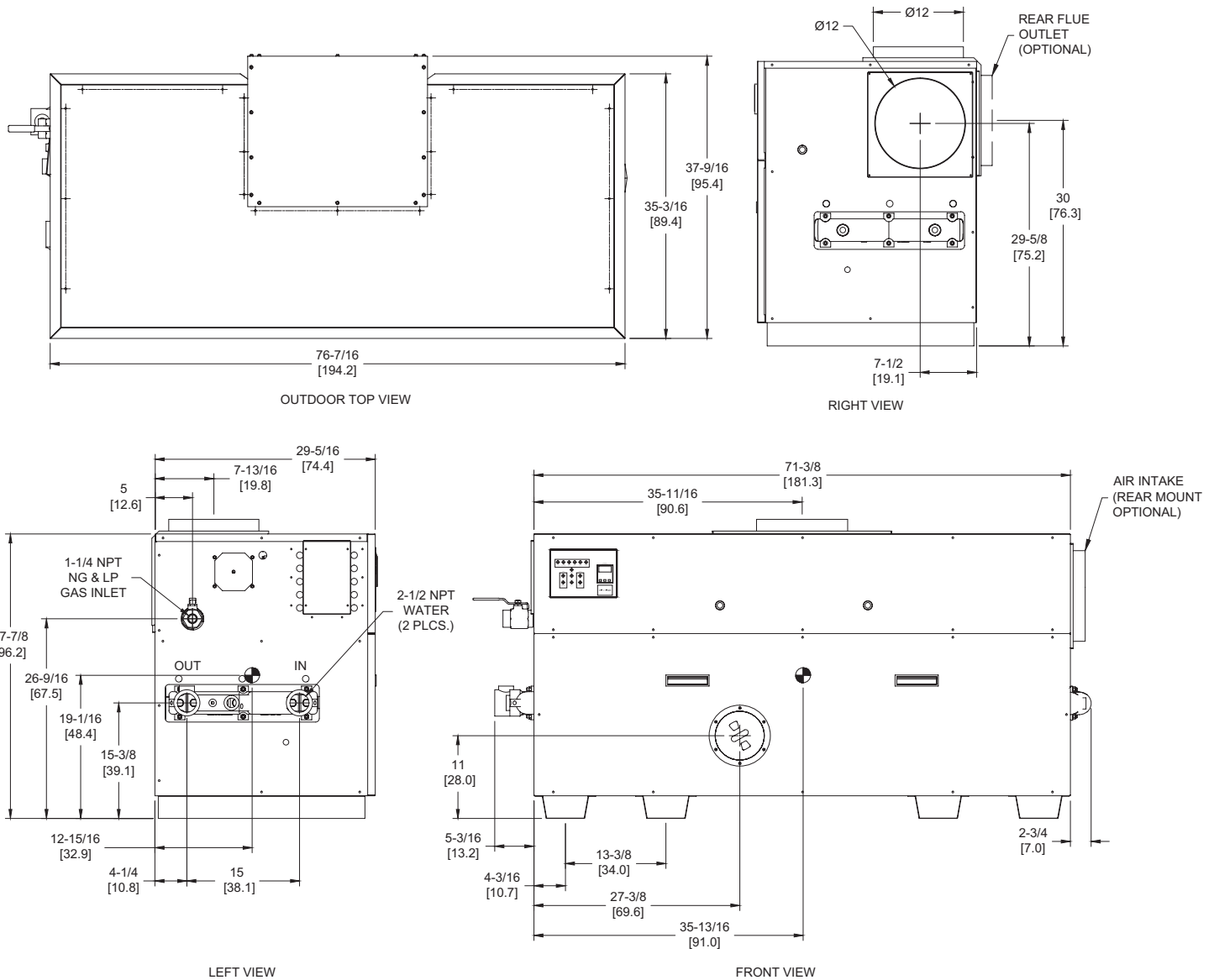
**Category I or Category III Appliance**

(see Installation and Operation Manual for venting information)

## CODE OPTIONS

CSD-1

UTC Lockout/Reset Control  
Manual Reset LWCO



RSUB-33-F

**Notes:**

1. Dimensions are approximate and should not be used to "rough-in" equipment.
2. Dimensions are subject to change without notice.
3. All dimensions are in inches (cm).
4. Symbol indicates center of gravity.

## BOILER CERTIFIED RATINGS & CAPACITIES

<b>Fuel Type</b>	Natural/Propane Gas	<b>Boiler FLA</b>	11.0*
<b>Input BTU/hr.</b>	1,350,000 / 396 kW	<b>Min. Gas Pressure Required</b>	7" WC**
<b>Output BTU/hr.</b>	1,147,500 / 336 kW	<b>Max. Gas Pressure Allowed</b>	14" WC
<b>Electrical Requirements</b>	120VAC/ 1 ph/ 60 hz	<b>Operating Weight</b>	805 lbs. / 365 kg.

## BOILER / WATER HEATER TRIM & CONTROLS

<b>Main Gas Valve</b>	Honeywell (2) V8944 1"	<b>Pilot Valve</b>	Honeywell VR8205
<b>Firing Valve</b>	Honeywell (2) B200T1033 1"	<b>Air Switch</b>	Cleveland RSS-495
<b>Safety Valve</b>	ASCO L8214G 1-1/4"	<b>Blower Motor</b>	(2) 1/4 hp - FLA 10.2
<b>Ignition Control</b>	UTC 1003-61A	<b>Relief Valve - DW</b>	3/4" x 3/4" set @ 125 psi
<b>Operating Control</b>	Tekmar BTC-2PA	<b>Relief Valve - DB</b>	3/4" x 1" set @ 50 psi
<b>Operating Control</b>	Tekmar BTC-4PA	<b>Flow Switch</b>	TACO
<b>High Limit</b>	Honeywell L4008E		

## A.S.M.E.

<b>ASME Sect IV Htg Surface</b>	136.0 Sq. Ft. / 12.63 Sq. M.	<b>Design Data</b>	Max. 160 psig & 250°F
<b>Water Volume</b>	4.8 gal / 18.2 Liters		

\* Add circulator amps.

\*\* For incoming gas pressures lower than 7" WC natural or 11" WC propane, consult factory.

## BOILER TEMPERATURE RISE / PRESSURE DROP

20°F / 11.1°C				25°F / 13.9°C				30°F / 16.7°C				35°F / 19.4°C			
Flow Rate		Pressure Drop		Flow Rate		Pressure Drop		Flow Rate		Pressure Drop		Flow Rate		Pressure Drop	
GPM	L/s	Ft	kPa	GPM	L/s	Ft	kPa	GPM	L/s	Ft	kPa	GPM	L/s	Ft	kPa
114.8†	7.2†	7.15	21.1	91.8	5.8	4.73	13.9	76.5	4.8	3.38	9.9	65.6	4.1	2.54	7.5

† Flow exceeds recommended maximum use a greater temperature rise or consult manufacturer.  
Cupronickel heat exchanger should be considered.

## WATER HEATER HOURLY RECOVERY CAPACITY (GPH & LPH)

40°F	22°C	60°F	33°C	80°F	44°C	100°F	56°C	120°F	67°C	140°F	78°C
3339	12620	2226	8413	1669	6310	1335	5048	1113	4207	954	3606

<b>REP FIRM</b>	_____
<b>SUBMITTED BY</b>	_____
<b>JOB NAME</b>	_____
<b>ARCHITECT</b>	_____
<b>ENGINEER</b>	_____
<b>CONTRACTOR</b>	_____
<b>DATE</b>	_____

# DOMINATOR 1350

**Category I or Category III Appliance**  
(see Installation and Operation Manual for venting information)

**RBI**®  
RELIABLE. BOLD. INNOVATIVE.

A Division of Mestek, Inc.  
Westfield, MA 01085  
(413) 564-5515

# DOMINATOR 1500

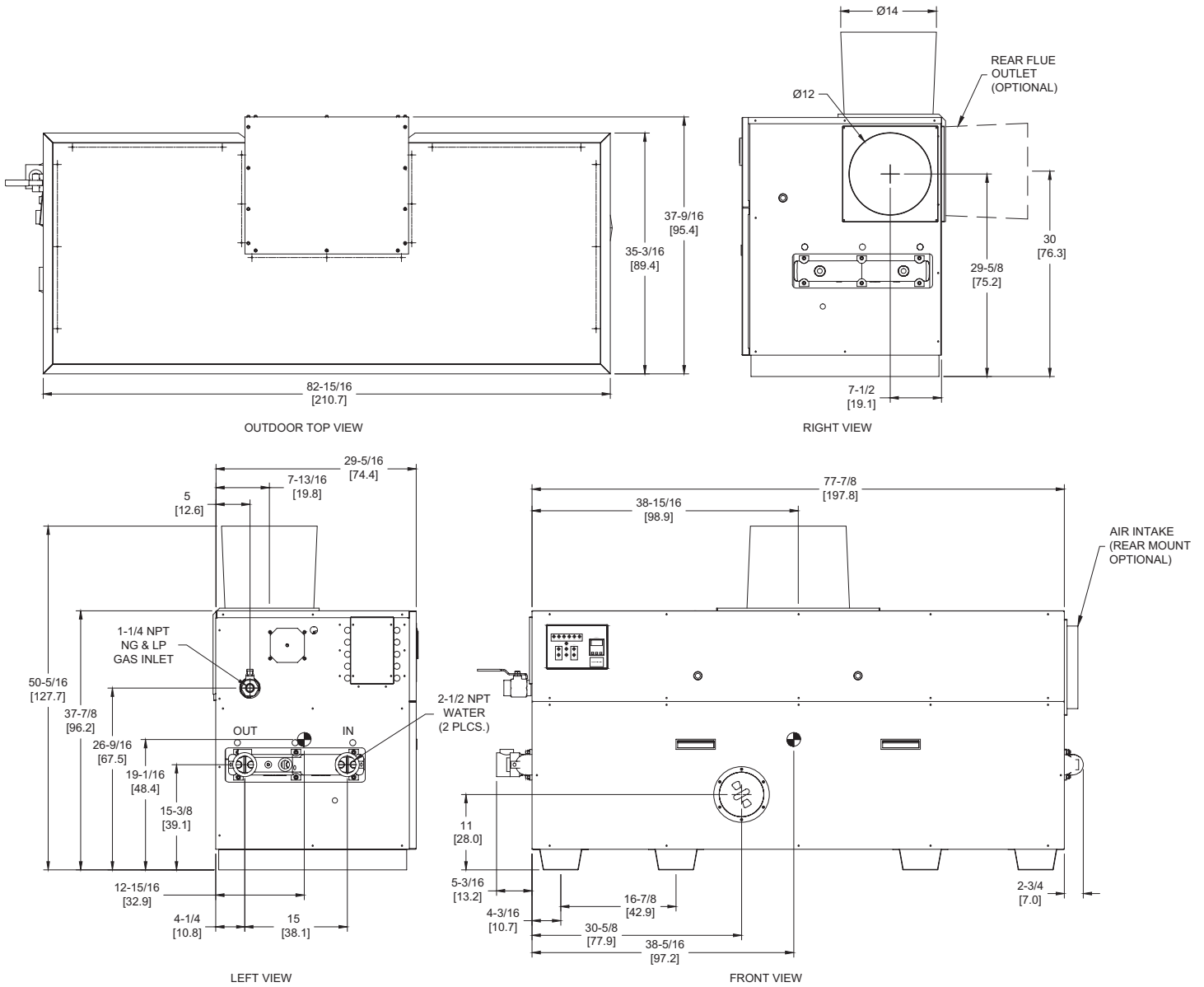
Category I or Category III Appliance

(see Installation and Operation Manual for venting information)

## CODE OPTIONS

CSD-1

UTC Lockout/Reset Control  
Manual Reset LWCO



RSUB-34-G

### Notes:

1. Dimensions are approximate and should not be used to "rough-in" equipment.
2. Dimensions are subject to change without notice.
3. All dimensions are in inches (cm).
4. Symbol indicates center of gravity.

## BOILER CERTIFIED RATINGS & CAPACITIES

<b>Fuel Type</b>	Natural/Propane Gas	<b>Boiler FLA</b>	11.0*
<b>Input BTU/hr.</b>	1,500,000 / 440 kW	<b>Min. Gas Pressure Required</b>	7" WC**
<b>Output BTU/hr.</b>	1,275,000 / 374 kW	<b>Max. Gas Pressure Allowed</b>	14" WC
<b>Electrical Requirements</b>	120VAC/ 1 ph/ 60 hz	<b>Operating Weight</b>	846 lbs. / 384 kg.

## BOILER / WATER HEATER TRIM & CONTROLS

<b>Main Gas Valve</b>	Honeywell (2) V8944 1"	<b>Pilot Valve</b>	Honeywell VR8205
<b>Firing Valve</b>	Honeywell (2) B200T1033 1"	<b>Air Switch</b>	Cleveland RSS-495
<b>Safety Valve</b>	ASCO L8214G 1-1/4"	<b>Blower Motor</b>	(2) 1/4 hp - FLA 10.2
<b>Ignition Control</b>	UTC 1003-61A	<b>Relief Valve - DW</b>	3/4" x 3/4" set @ 125 psi
<b>Operating Control</b>	Tekmar BTC-2PA	<b>Relief Valve - DB</b>	3/4" x 1" set @ 50 psi
<b>Operating Control</b>	Tekmar BTC-4PA	<b>Flow Switch</b>	TACO
<b>High Limit</b>	Honeywell L4008E		

## A.S.M.E.

<b>ASME Sect IV Htg Surface</b>	149.0 Sq. Ft. / 13.84 Sq. M.	<b>Design Data</b>	Max. 160 psig & 250°F
<b>Water Volume</b>	4.9 gal / 18.6 Liters		

\* Add circulator amps.

\*\* For incoming gas pressures lower than 7" WC natural or 11" WC propane, consult factory.

## BOILER TEMPERATURE RISE / PRESSURE DROP

25°F / 13.9°C				30°F / 16.7°C				35°F / 19.4°C			
Flow Rate		Pressure Drop		Flow Rate		Pressure Drop		Flow Rate		Pressure Drop	
GPM	L/s	Ft	kPa	GPM	L/s	Ft	kPa	GPM	L/s	Ft	kPa
102.0	6.4	6.29	18.5	85.0	5.4	4.49	13.2	72.9	4.6	3.37	9.9

## WATER HEATER HOURLY RECOVERY CAPACITY (GPH & LPH)

40°F	22°C	60°F	33°C	80°F	44°C	100°F	56°C	120°F	67°C	140°F	78°C
3709	14022	2473	9348	1855	7011	1484	5609	1236	4674	1060	4006

<b>REP FIRM</b>	_____
<b>SUBMITTED BY</b>	_____
<b>JOB NAME</b>	_____
<b>ARCHITECT</b>	_____
<b>ENGINEER</b>	_____
<b>CONTRACTOR</b>	_____
<b>DATE</b>	_____

# DOMINATOR 1500

**Category I or Category III Appliance**  
(see Installation and Operation Manual for venting information)



A Division of Mestek, Inc.  
Westfield, MA 01085  
(413) 564-5515



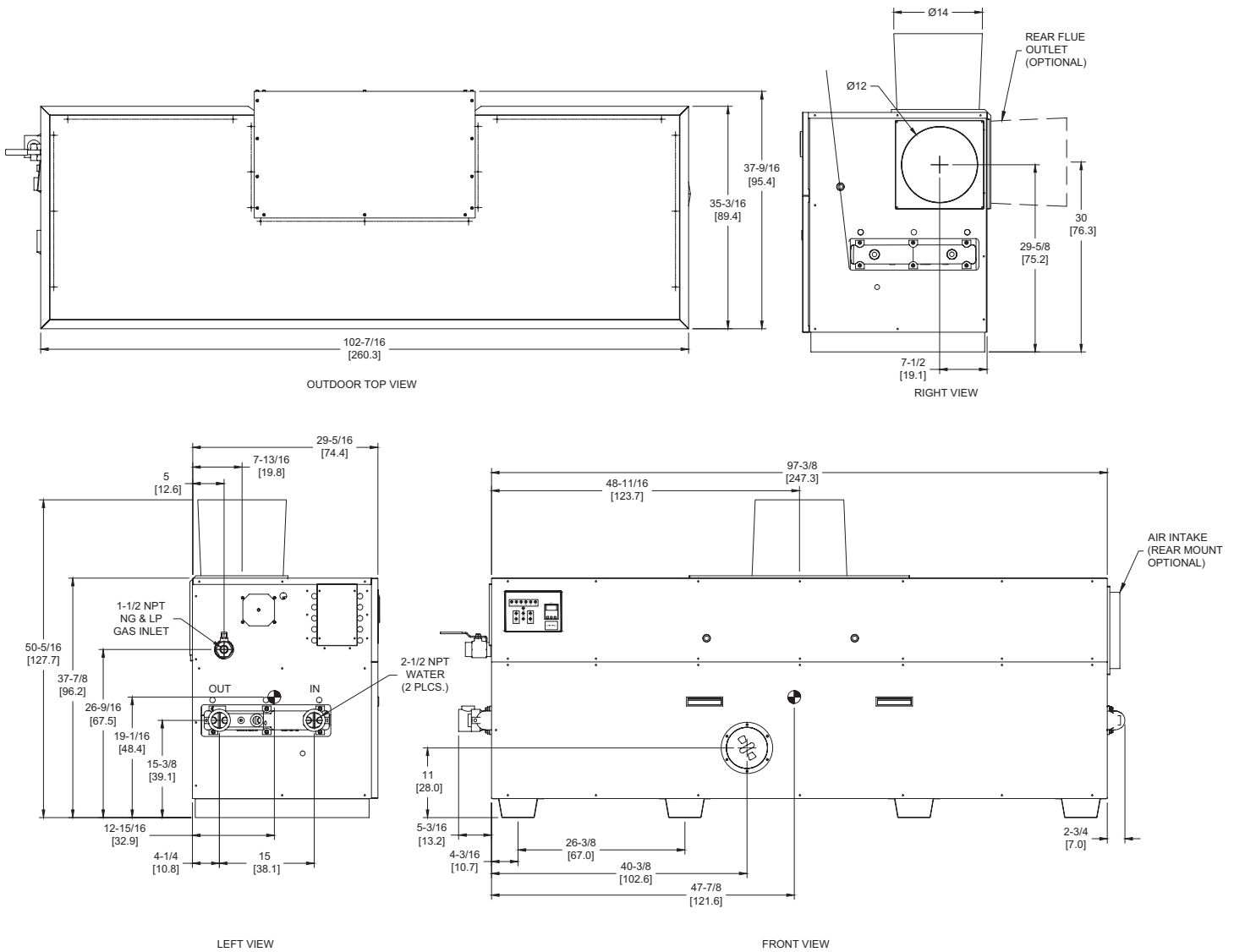
# DOMINATOR 1950

Category I or Category III Appliance

(see Installation and Operation Manual for venting information)

## CODE OPTIONS

<b>CSD-1</b>	UTC Lockout/Reset Control Manual Reset LWCO
--------------	--



RSUB-35-G

### Notes:

1. Dimensions are approximate and should not be used to "rough-in" equipment.
2. Dimensions are subject to change without notice.
3. All dimensions are in inches (cm).
4. Symbol indicates center of gravity.

## BOILER CERTIFIED RATINGS & CAPACITIES

<b>Fuel Type</b>	Natural/Propane Gas	<b>Boiler FLA</b>	11.0*
<b>Input BTU/hr.</b>	1,950,000 / 572 kW	<b>Min. Gas Pressure Required</b>	7" WC**
<b>Output BTU/hr.</b>	1,657,500 / 486 kW	<b>Max. Gas Pressure Allowed</b>	14" WC
<b>Electrical Requirements</b>	120VAC/ 1 ph/ 60 hz	<b>Operating Weight</b>	1088 lbs. / 494 kg.

## BOILER / WATER HEATER TRIM & CONTROLS

<b>Main Gas Valve</b>	Honeywell (2) V8944 1"	<b>Pilot Valve</b>	Honeywell VR8205
<b>Firing Valve</b>	Honeywell (2) B200T1033 1"	<b>Air Switch</b>	Cleveland RSS-495
<b>Safety Valve</b>	ASCO L8214G 1-1/2"	<b>Blower Motor</b>	(2) 1/4 hp - FLA 10.2
<b>Ignition Control</b>	UTC 1003-61A	<b>Relief Valve - DW</b>	3/4" x 3/4" set @ 125 psi
<b>Operating Control</b>	Tekmar BTC-2PA	<b>Relief Valve - DB</b>	3/4" x 1-1/4" set @ 50 psi
<b>Operating Control</b>	Tekmar BTC-4PA	<b>Flow Switch</b>	TACO
<b>High Limit</b>	Honeywell L4008E		

## A.S.M.E.

<b>ASME Sect IV Htg Surface</b>	189.0 Sq. Ft. / 17.56 Sq. M.	<b>Design Data</b>	Max. 160 psig & 250°F
<b>Water Volume</b>	5.4 gal / 20.4 Liters		

\* Add circulator amps.

\*\* For incoming gas pressures lower than 7" WC natural or 11" WC propane, consult factory.

## BOILER TEMPERATURE RISE / PRESSURE DROP

30°F / 16.7°C				35°F / 19.4°C			
Flow Rate		Pressure Drop		Flow Rate		Pressure Drop	
GPM	L/s	Ft	kPa	GPM	L/s	Ft	kPa
110.5†	7.0†	9.18	27.0	94.7	6.0	6.90	20.3

† Flow exceeds recommended maximum use a greater temperature rise or consult manufacturer.  
Cupronickel heat exchanger should be considered.

## WATER HEATER HOURLY RECOVERY CAPACITY (GPH & LPH)

40°F	22°C	60°F	33°C	80°F	44°C	100°F	56°C	120°F	67°C	140°F	78°C
4816	18206	3211	12138	2408	9103	1927	7283	1605	6069	1376	5202

<b>REP FIRM</b>	_____
<b>SUBMITTED BY</b>	_____
<b>JOB NAME</b>	_____
<b>ARCHITECT</b>	_____
<b>ENGINEER</b>	_____
<b>CONTRACTOR</b>	_____
<b>DATE</b>	_____

# DOMINATOR 1950

**Category I or Category III Appliance**  
(see Installation and Operation Manual for venting information)

**RBI**®  
RELIABLE. BOLD. INNOVATIVE.

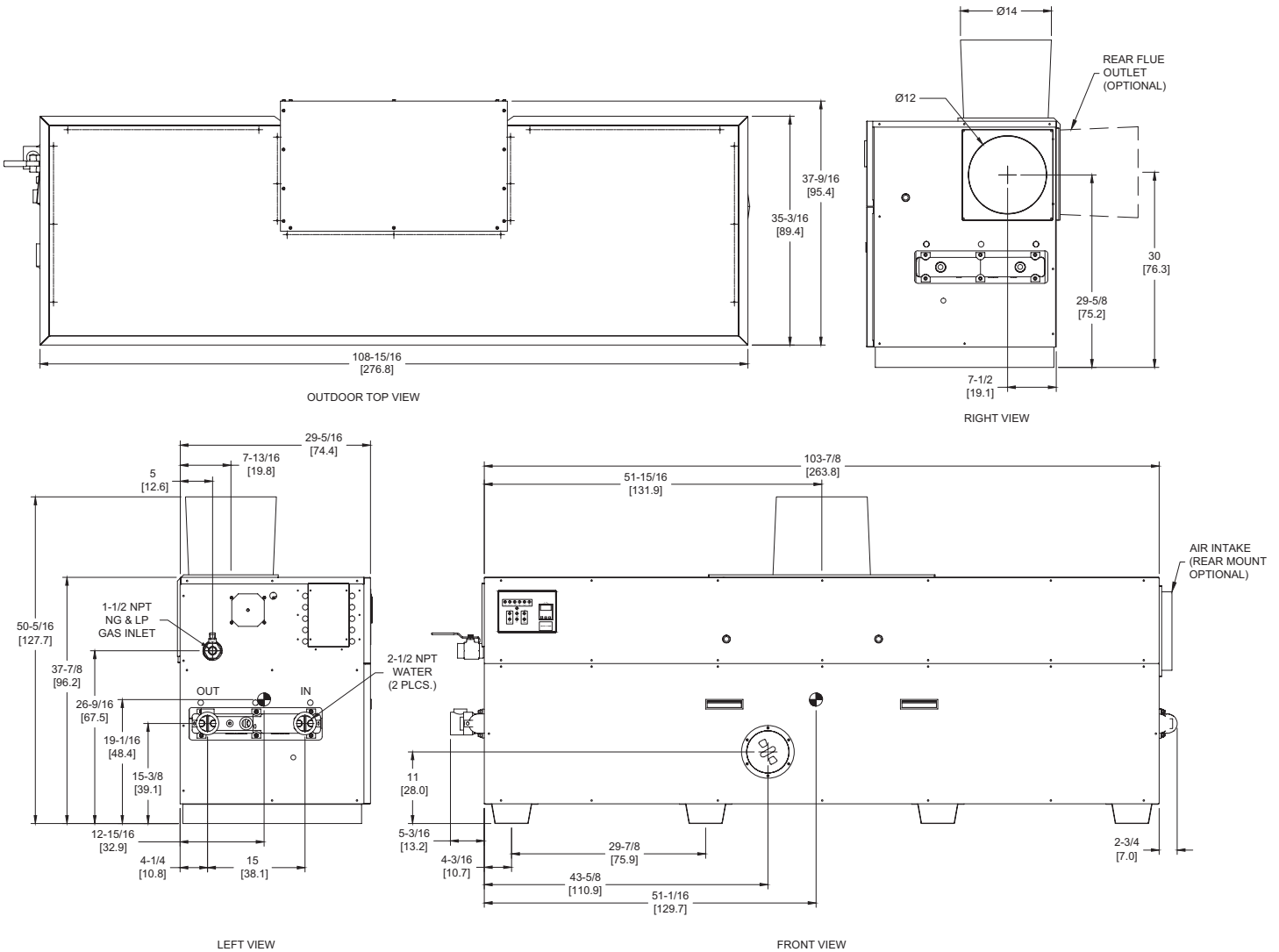
A Division of Mestek, Inc.  
Westfield, MA 01085  
(413) 564-5515

# DOMINATOR 2100

**Category I or Category III Appliance**  
(see Installation and Operation Manual for venting information)

## CODE OPTIONS

<b>CSD-1</b>	UTC Lockout/Reset Control Manual Reset LWCO
--------------	--



RSUB-36-G

### Notes:

1. Dimensions are approximate and should not be used to "rough-in" equipment.
2. Dimensions are subject to change without notice.
3. All dimensions are in inches (cm).
4. Symbol indicates center of gravity.

## BOILER CERTIFIED RATINGS & CAPACITIES

<b>Fuel Type</b>	Natural/Propane Gas	<b>Boiler FLA</b>	11.0*
<b>Input BTU/hr.</b>	2,100,000 / 616 kW	<b>Min. Gas Pressure Required</b>	7" WC**
<b>Output BTU/hr.</b>	1,785,000 / 523 kW	<b>Max. Gas Pressure Allowed</b>	14" WC
<b>Electrical Requirements</b>	120VAC/ 1 ph/ 60 hz	<b>Operating Weight</b>	1105 lbs. / 502 kg.

## BOILER / WATER HEATER TRIM & CONTROLS

<b>Main Gas Valve</b>	Honeywell (2) V8944 1-1/4"	<b>Pilot Valve</b>	Honeywell VR8205
<b>Firing Valve</b>	Honeywell (2) B200T1041 1-1/4"	<b>Air Switch</b>	Cleveland RSS-495
<b>Safety Valve</b>	ASCO L8214G 1-1/2"	<b>Blower Motor</b>	(2) 1/4 hp - FLA 10.2
<b>Ignition Control</b>	UTC 1003-61A	<b>Relief Valve - DW</b>	3/4" x 3/4" set @ 125 psi
<b>Operating Control</b>	Tekmar BTC-2PA	<b>Relief Valve - DB</b>	3/4" x 1-1/4" set @ 50 psi
<b>Operating Control</b>	Tekmar BTC-4PA	<b>Flow Switch</b>	TACO
<b>High Limit</b>	Honeywell L4008E		

## A.S.M.E.

<b>ASME Sect IV Htg Surface</b>	202.0 Sq. Ft. / 18.77 Sq. M.	<b>Design Data</b>	Max. 160 psig & 250°F
<b>Water Volume</b>	5.6 gal / 21.4 Liters		

\* Add circulator amps.

\*\* For incoming gas pressures lower than 7" WC natural or 11" WC propane, consult factory.

## BOILER TEMPERATURE RISE / PRESSURE DROP

30°F / 16.7°C				35°F / 19.4°C			
Flow Rate		Pressure Drop		Flow Rate		Pressure Drop	
GPM	L/s	Ft	kPa	GPM	L/s	Ft	kPa
119.0†	7.5†	11.24	33.1	102.0	6.4	8.45	24.9

† Flow exceeds recommended maximum use a greater temperature rise or consult manufacturer.  
Cupronickel heat exchanger should be considered.

## WATER HEATER HOURLY RECOVERY CAPACITY (GPH & LPH)

40°F	22°C	60°F	33°C	80°F	44°C	100°F	56°C	120°F	67°C	140°F	78°C
5187	19607	3458	13071	2593	9803	2075	7843	1729	6536	1482	5602

<b>REP FIRM</b>	_____
<b>SUBMITTED BY</b>	_____
<b>JOB NAME</b>	_____
<b>ARCHITECT</b>	_____
<b>ENGINEER</b>	_____
<b>CONTRACTOR</b>	_____
<b>DATE</b>	_____

# DOMINATOR 2100

**Category I or Category III Appliance**  
(see Installation and Operation Manual for venting information)

**RBI**®  
RELIABLE. BOLD. INNOVATIVE.

A Division of Mestek, Inc.  
Westfield, MA 01085  
(413) 564-5515